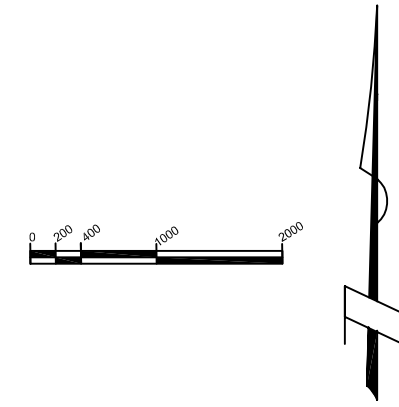
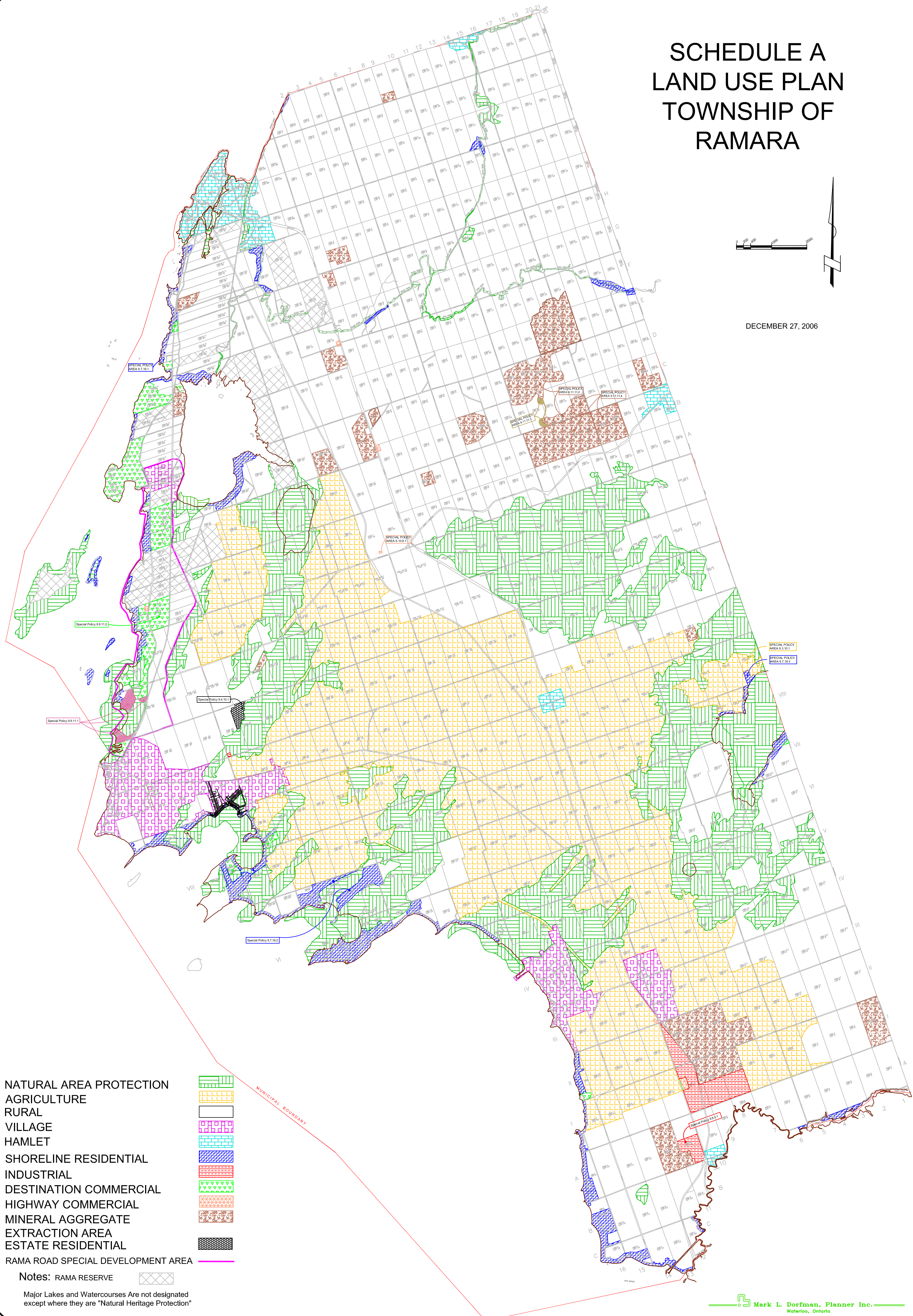


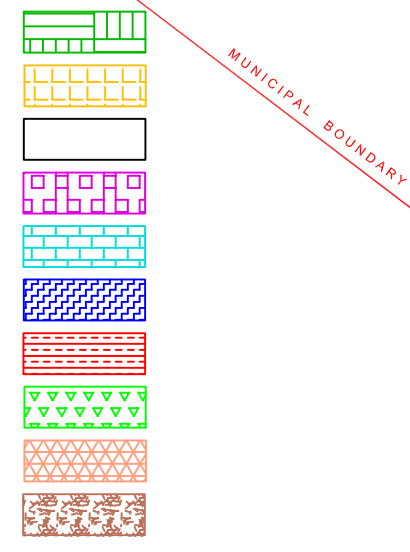
# SCHEDULE A LAND USE PLAN TOWNSHIP OF RAMARA



DECEMBER 27, 2006



- NATURAL AREA PROTECTION
- AGRICULTURE
- RURAL
- VILLAGE
- HAMLET
- SHORELINE RESIDENTIAL
- INDUSTRIAL
- DESTINATION COMMERCIAL
- HIGHWAY COMMERCIAL
- MINERAL AGGREGATE EXTRACTION AREA
- ESTATE RESIDENTIAL
- RAMA ROAD SPECIAL DEVELOPMENT AREA



Notes: RAMA RESERVE Major Lakes and Watercourses Are not designated except where they are "Natural Heritage Protection"